



DOBERMANN PRO

Compact tactical flashlight 2 in 1
with magnetic charger

 **1500**
MAX LUMENS

 **32**
HOURS RUNTIME

 **368**
METERS THROW

 WHITE OR
WARM
LIGHT

 **RECHARGEABLE**
Magnetic USB charger
and battery included

 **2 in 1**



ARMYTEK

DOBERMANN PRO

NARROW BEAM OF LIGHT

High Intensity LED in combination with special reflector in a compact head provides narrow beam of light with smooth transition between hotspot and spill

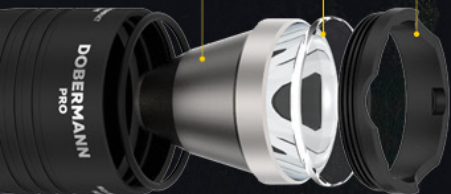
 **1500**
LUMENS

 **368**
METERS

PRECISELY
CALCULATED
REFLECTOR

TEMPERED
GLASS

STEEL
BEZEL



Steel bezel and tempered glass with anti-reflective coating for protection of the optical system

368 m

A yellow arrow originates from the '368 m' text and points towards the end of the illuminated path in the background image.

NARROW BEAM OF LIGHT

Narrow beam of light and smooth transition between hotspot and spill for use at medium distances

6°: 40°
HOTSPOT : SPILL

Hotspot diameter is 10 meters at 100 meters distance

100 m



10 m

ARMYTEK

DOBERMANN PRO

1. TACTICAL LIGHT

Withstands any recoil

1 inch body is compatible with any standard weapon mount

25.4 mm

Injury-safe ergonomic silicone grip for convenient tactical hold

Installation of the driver inside a reinforced capsule filled with protective compound

Two improved springs for even more efficient performance and battery and driver protection



ARMYTEK

DOBERMANN PRO

2. EVERY DAY CARRY LIGHT

Steel clip with wear-resistant black titanium coating for mounting on clothes, equipment or belt

Compact body for comfortable day-to-day carry



Nylon holster with several fixing options: on a belt of any width, on a Molle mount, on equipment thanks to durable steel ring



Size-adjustable wrist lanyard made of heavy-duty paracord with steel carabiner for quick removal and installation on the flashlight

ARMYTEK

DOBERMANN PRO

DELIBERATE DESIGN

Solid body made
from aircraft-grade
aluminium 6061-T6

33.5 mm
HEAD DIAMETER

150 mm
LENGTH

114 / 164 g
WEIGHT WITHOUT / WITH BATTERY



Steel striking bezel with matt non-reflective black titanium coating, which prevents location disclosure, is used for additional protection of the optical system in the event of a fall and as a shock-crushing tool

Special matt anti-abrasive finish without rough knurling, convenient holding even with wet hands

TWO-PHASE ELECTRONIC BUTTON

PRO

20 times more durable
compared to mechanical switch

TWO LEVELS OF PRESSING:

Half-pressing – momentary on
when the button is pressed

Full click – constant light

Non-flat button allows easy switching on of
the flashlight with a palm

Noiseless electronic button prevents location
disclosure when hunting or during special
operations



TWO TYPES OF OPERATION

PRO

1. HUNTING TYPE

5 modes by default, possibility to adjust optimal additional mode

2. TACTICAL TYPE

4 modes, fast switching between the modes, instant access to Strobe mode

SWITCHING BETWEEN TYPES OF OPERATION

Unscrew and tighten up the head of the flashlight at least 10 times. The pause between the moves must be less than 1 second



Permanent on

Full click of the button

Momentary on

The flashlight is switched on by half-pressing of the button (no click) till the button is released

AUTOMEMORIZING

After switching off the last used mode is memorized for quick access at next switching on



DOBERMANN PRO

POWERFUL ELECTRONICS

PRO

Constant brightness even at low ambient temperatures and not fully charged battery



from -40 °C to +40 °C



INDICATION BY LIGHT



Low battery level indication

LED FLASHES 2 TIMES AFTER
30 SECONDS FROM SWITCHING ON

Brightness of the mode is below
25% from the rated value

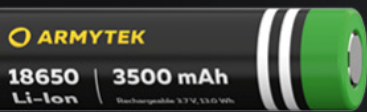




DOBERMANN PRO

INNOVATIVE TECHNOLOGY

Use of any standard
18650 Li-Ion battery



Full protection against short circuit even in case of contact between magnetic connector and metal objects

We recommend Armytek 18650 Li-Ion 3500 mAh batteries based on Korean and Japanese components



ARMYTEK

DOBERMANN PRO

FAST MAGNETIC CHARGER

Compatible with standard 18650 Li-Ion
batteries of any manufacturer

Used with any wall or car USB adapter

Reliable and durable
magnetic port

Charges 18650 Li-Ion
3500 mAh battery in

**3 hours
40 minutes**



CHARGING PROCESS

For charging: tighten the head of the flashlight as far as it can go and adjust the magnetic charger

After charging: unplug the charger, tighten the tailcap

Indication



RED
Charging



GREEN
Charging is finished



ORANGE
USB power source voltage is too low, charging current is reduced

RED BLINKING
Clean the external and internal contacts of the tailcap, as well as the contact areas of the charger

ORANGE BLINKING
Bad contact or low USB power source voltage

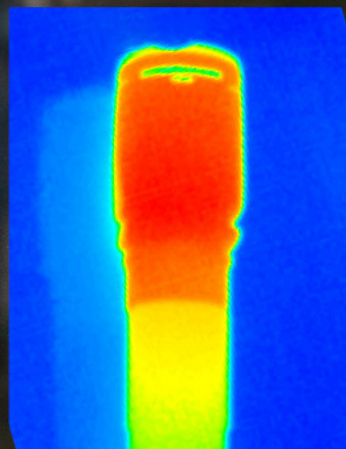


TEMPERATURE CONTROL

Active real-time temperature control ensures safe and comfortable use

When the temperature becomes close to +58 °C, the brightness decreases, which allows avoiding flashlight and battery overheating, as well as LED degradation

Thought-out head design for better heat dissipation, spring on the driver to protect the battery from overheating



**COMPLIANT WITH EUROPEAN
SAFETY STANDARDS**

ARMYTEK

DOBERMANN PRO

HIGH RELIABILITY

IP68 standard
Total protection from water and dust



Submersion
at 25 meters up to 5 hours



Fallings from
up to 25 meters



Water resistant
magnetic connector



ADDITIONAL ACCESSORIES

Color filters to expand the functionality of the flashlight



Green light for hunting in woodland areas, not perceived by animals as a threat



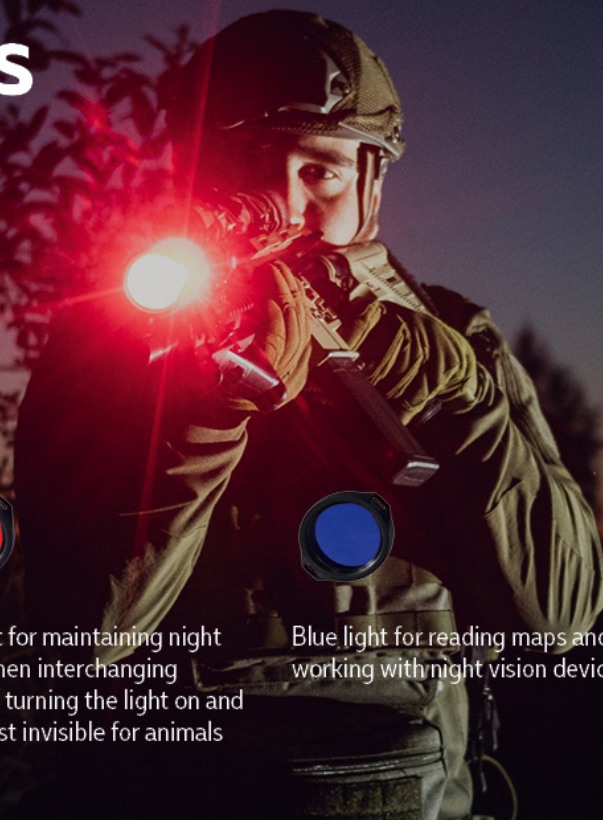
Red light for maintaining night vision when interchanging between turning the light on and off, almost invisible for animals



Blue light for reading maps and working with night vision devices



White diffused light is comfortable for performing tasks at close range



ARMYTEK

DOBERMANN PRO

UNPRECEDENTED WARRANTY



Armytek provides free warranty repairs for 10 years (excluding batteries, chargers, switches and connectors, which have 2-year warranty) from the date of purchase if there is a document confirming the purchase.



VERSIONS WITH WHITE OR WARM LIGHT

WHITE LIGHT

- More efficient blinding effect when using Strobe mode for self-defence
- Light output is 7% more
- Beam distance is 3% more

WARM LIGHT

- More efficient in rain and fog
- Better conveys the natural color of objects
- Reduces eye fatigue during prolonged use

WELL-THOUGHT-OUT SET OF ACCESSORIES



1. Flashlight
2. 18650 Li-Ion battery 3500 mAh
3. Magnetic USB charger

4. Silicone grip
5. Steel clip
6. Wrist lanyard



8



7. Nylon holster
8. 2 spare O-rings
9. User manual in eight languages